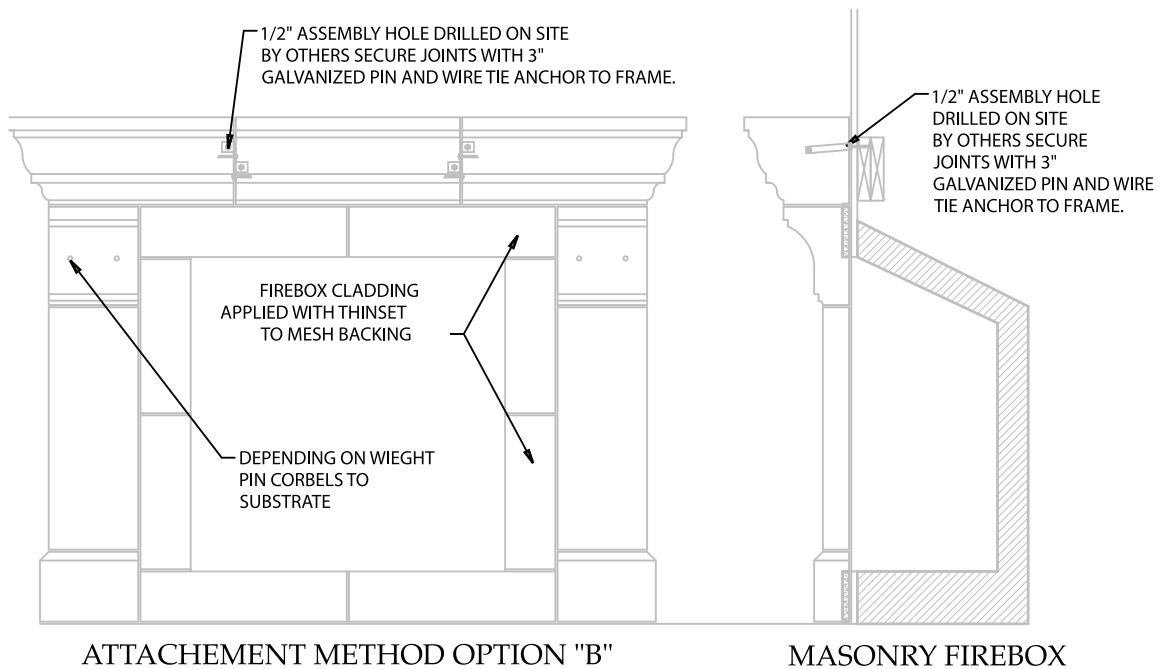
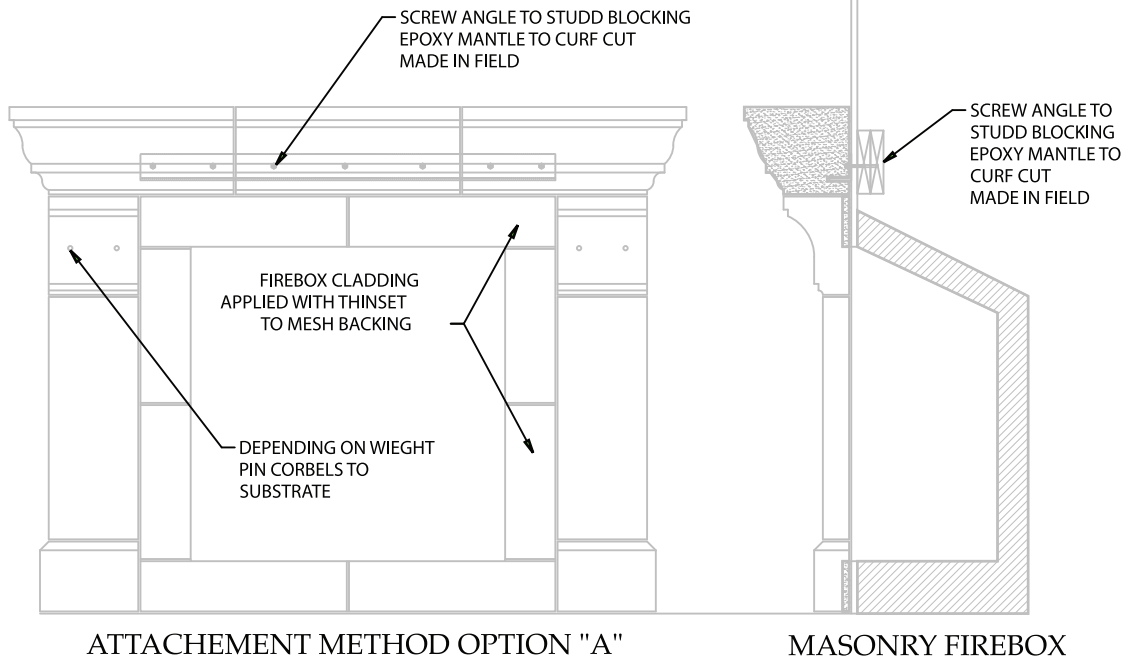


ATTACHMENT METHODS



Designs and drawings are the property of Materials Marketing, LTD. and may not be duplicated or reproduced without consent.

NOTE: The requirements for attaching stone to structures varies per your local State and County Code specifications.

Consult an engineer to best determine the proper attachment method to fit your climatic and seismic conditions.

The provided drawings are typical industry guidelines ONLY, as MML is not responsible for providing attachment methods.