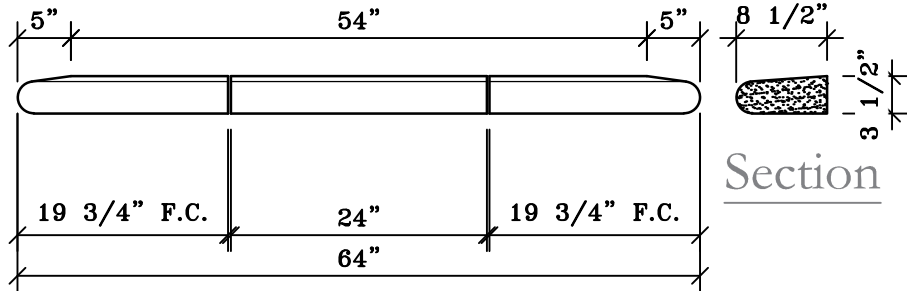
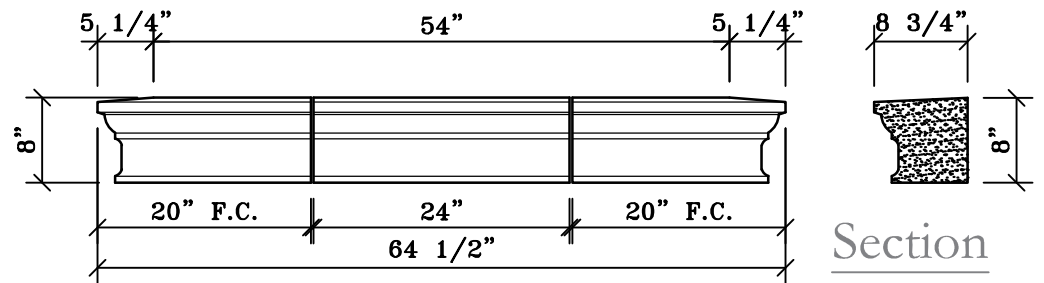


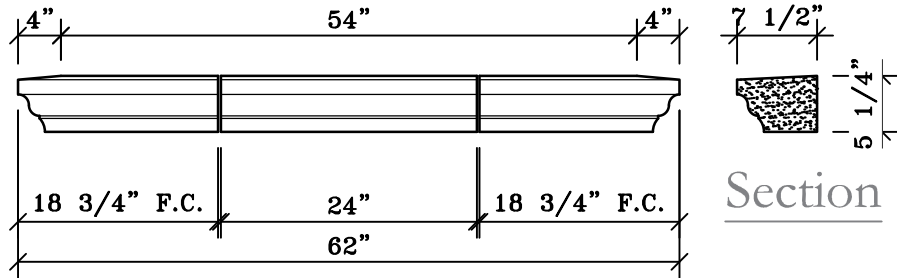
STANDARD SILLS - MASONRY DEPTH



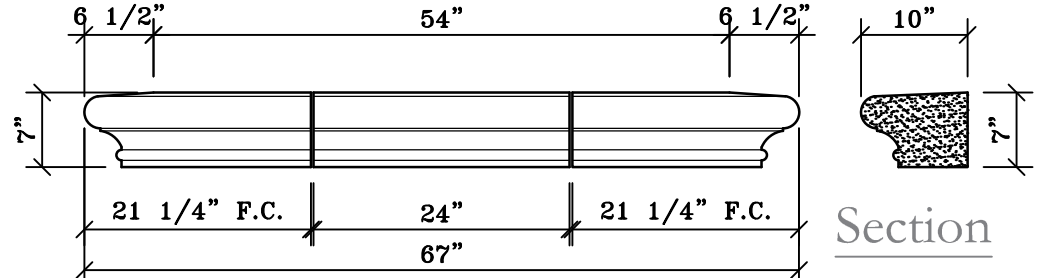
Front SL-901
Formerly SL295



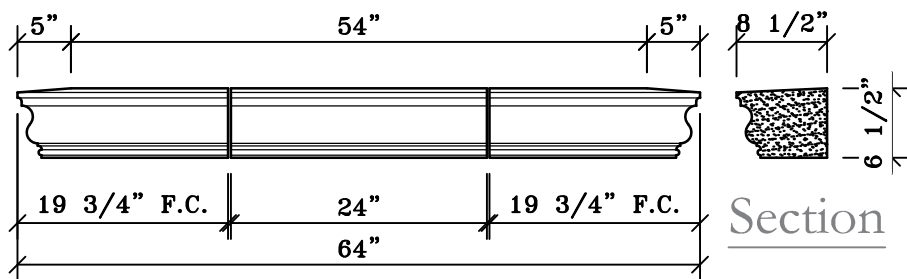
Front SL-904
Formerly SL291



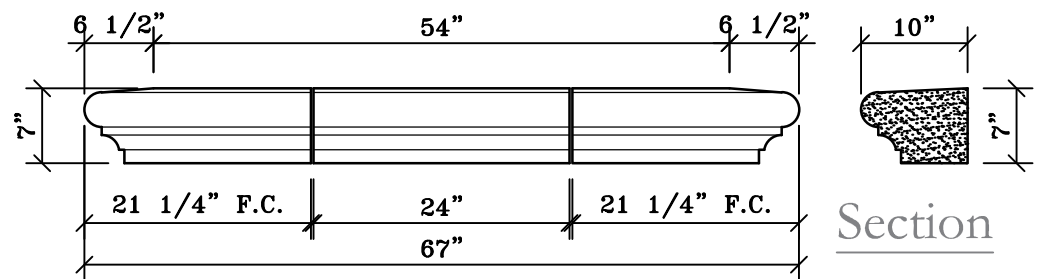
Front SL-902
Formerly SL294



Front SL-905
Formerly SL292



Front SL-903
Formerly SL293



Front SL-906
Formerly SL290

Note:
These Sills are intended for use with the
6" masonry depth Window Profiles.

m
materials marketing

architectural stone and tile
www.mstoneandtile.com

STANDARD SILLS
MASONRY
DEPTH